

# SAVIOLI METALMECCANICA

/// SINCE 1968

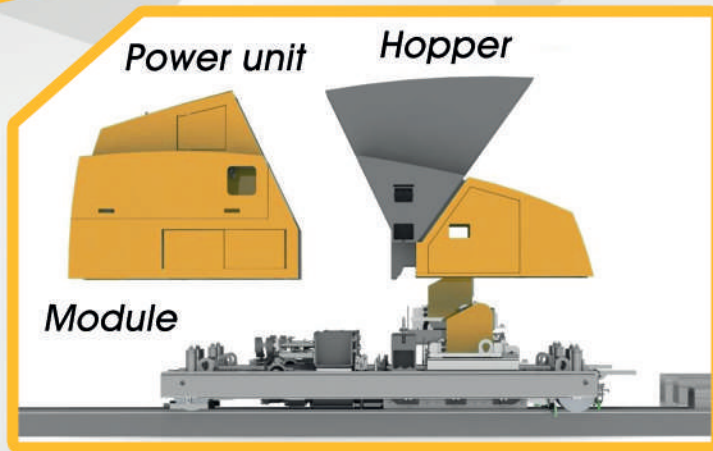


PRECAST TECHNOLOGY

*Concrete extruder spare parts*

Master Catalogue

After twenty years' experience on all kinds of systems, we can perform maintenance and overhaul of nozzle module units, entire operating units, concrete mixing hoppers and slab saws



**FLEXIBLE SOLUTIONS  
FOR ANY TYPE OF  
BUSINESS**

**SPECIALISED IN HIGH  
QUALITY EXTRUDER  
SPARE PARTS AND  
PRECAST TECHNOLOGY**

- TECHNICAL SUPPORT
- SALES SERVICE
- OVERHAUL
- MAINTENANCE



**Service Training Maintenance**



## ENGINEERING DEPARTMENT

Availability and courtesy are the basis of our working relationship with customers.

According to each single company's needs, our engineering department studies, designs and draws each part to meet even the smallest requirement.

This department always works closely with production to find and meet any customer's requirements. This is why customer satisfaction is for us an added and essential requisite in our overall view of quality.



## FACTORY AND WAREHOUSE

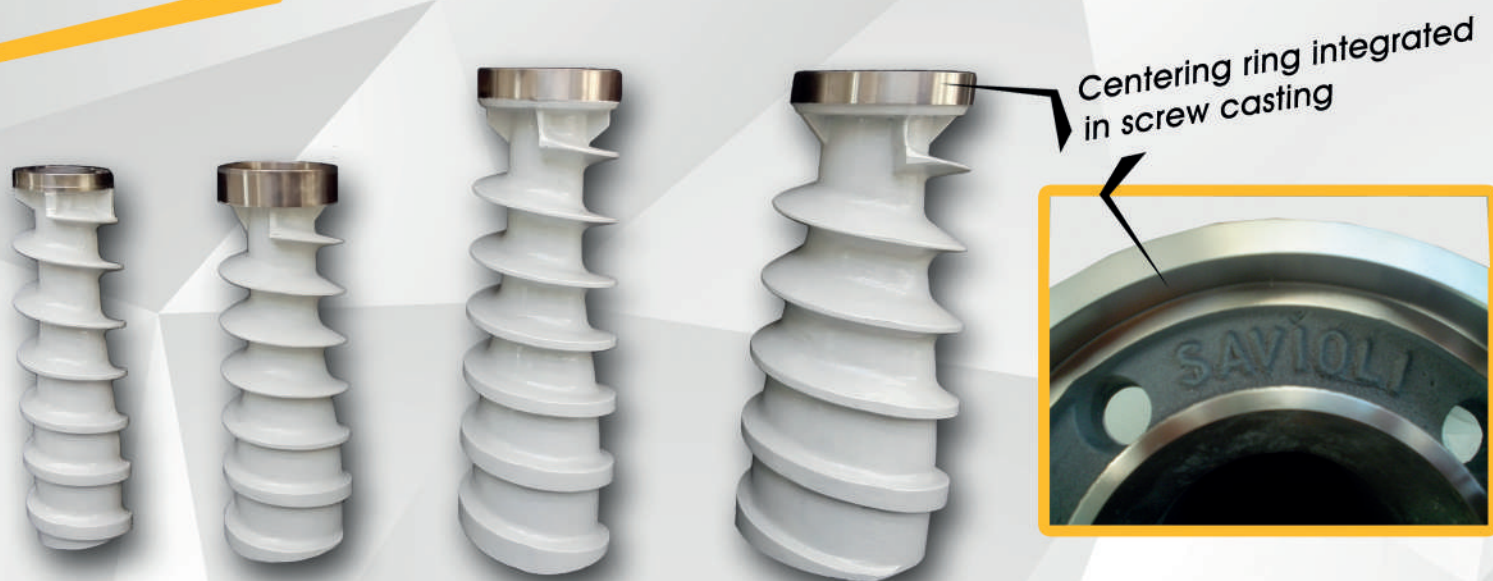
Spread over more than a 3700 m<sup>2</sup> indoor surface, our Company has a factory where all parts are built and repaired as well as a warehouse where we always have all parts in stock. Our flexible structure allows us to produce quantities smaller than the standard ones.

This enables us to deal with orders accurately and quickly and thus reducing waiting times.





## EXTRUSION SCREW



## MASS GUIDE

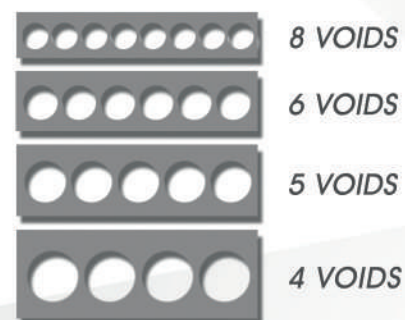


## HOLLOW-CORE SLEEVE

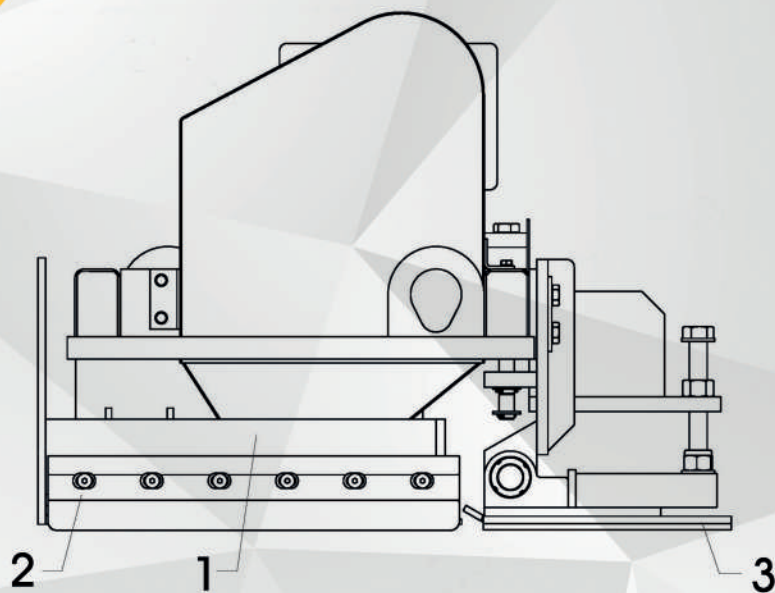


*\*any section on customer's request*

GROUP: **MODULE**  
UNIT: **NOZZLE**



**Spare PARTS**



**SMOOTHING PLATE**

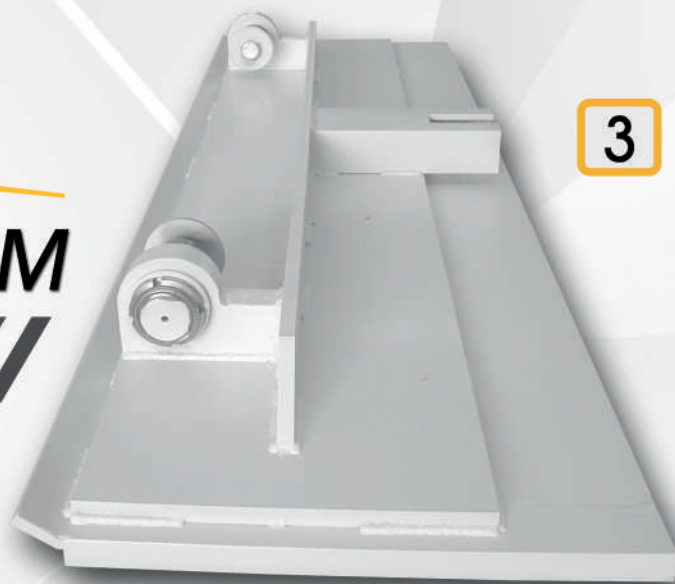
1



**EDGE PART**

2

**SMOOTHING BEAM**



3

GROUP: **MODULE**  
UNIT: **LEVELLING BEAM**

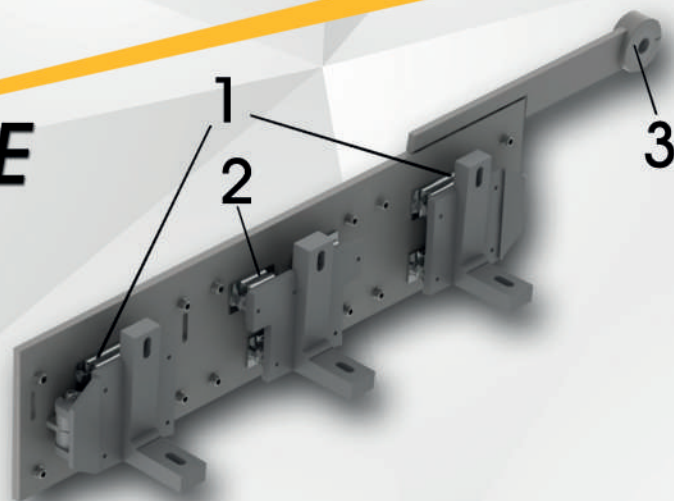
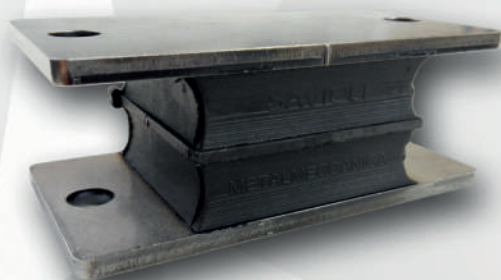


## DAMPER SIDE PLATE

1



2



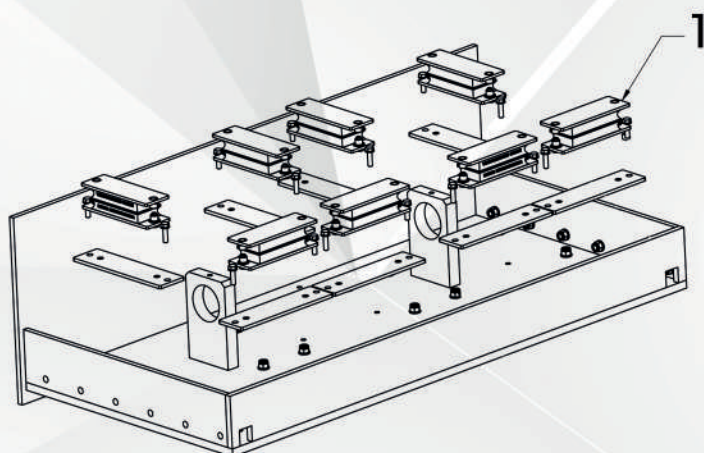
## FLEXIBLE SLEEVE

3



## DAMPER LEVELLING BEAM

1



GROUP: MODULE  
UNIT: SIDE PLATE  
LEVELLING BEAM

	8 VOIDS
	6 VOIDS
	5 VOIDS
	4 VOIDS

Spare PARTS

## WEAR PLATE

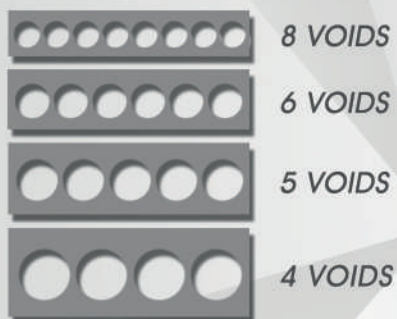


## DOWEL BAR

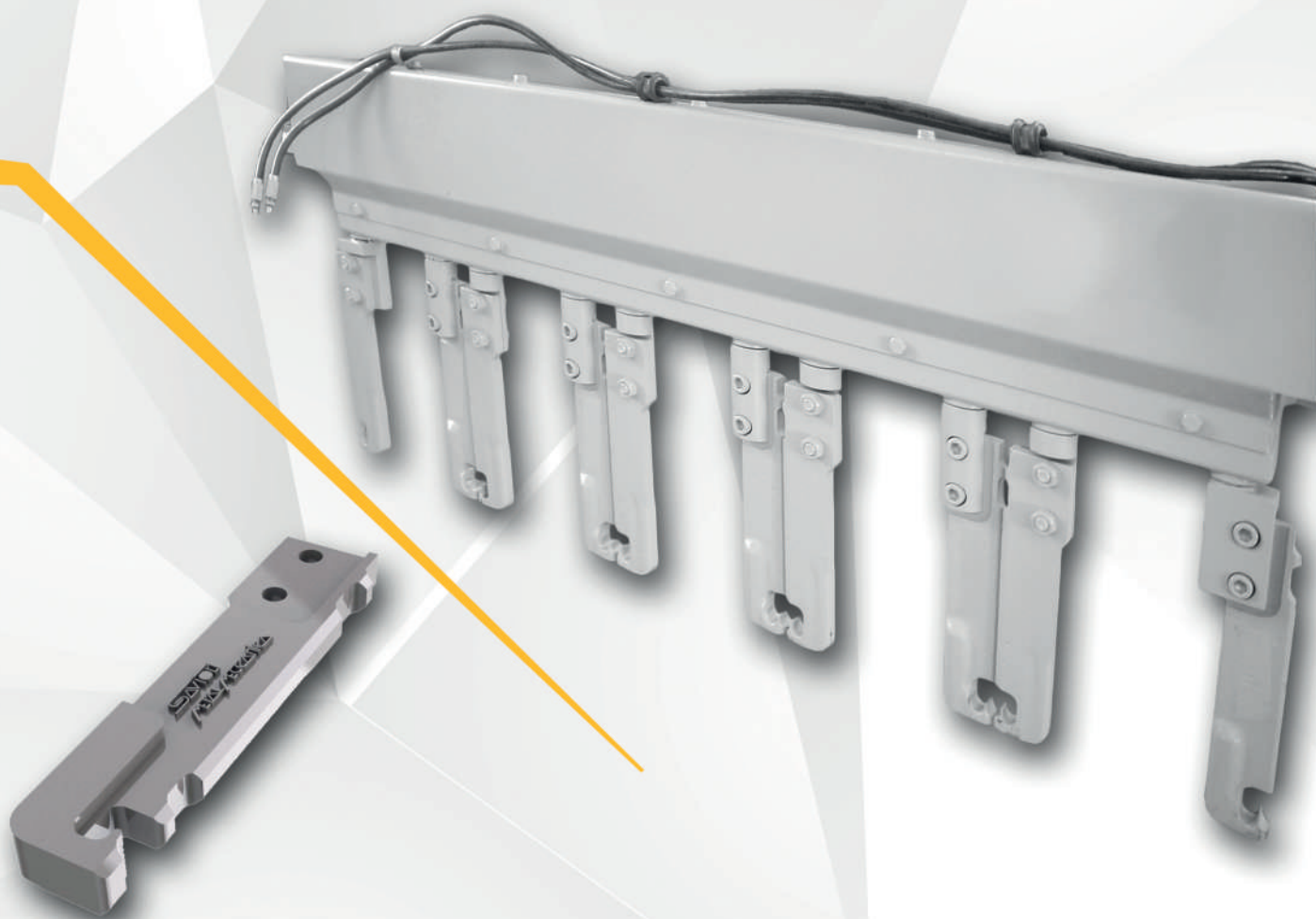


GROUP: **MODULE**  
UNIT: **SIDE PLATE**





## STRAND GUIDE



GROUP: MODULE  
UNIT: STRAND GUIDE

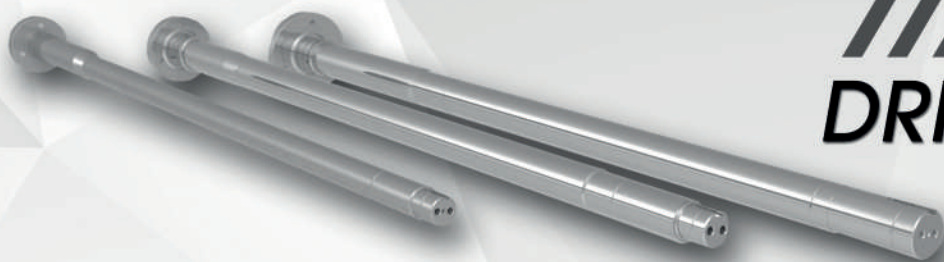
Spare PARTS



**SHAFT**



**DRIVE SHAFT**



**DRIVE SHAFT**



**SHAFT**



**FLANGE - MOUNTED BEARING**



**BEARING BUSHING**



**SPECIAL MECHANICAL spare parts**



////////////////////  
**ECCENTRIC BUSHING**



////////////////////  
**FASTENING FLANGE**



////////////////////  
**CHAIN WHEEL**



////////////////////  
**CONNECTING ROD**



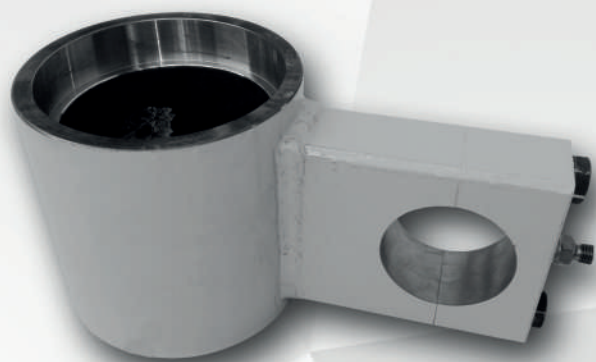
////////////////////  
**BUSHING**



**SPECIAL MECHANICAL spare parts**



## DRIVING BAR



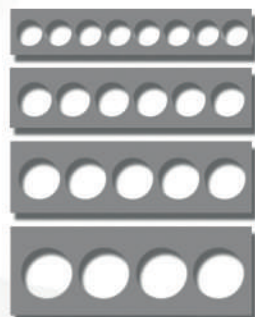
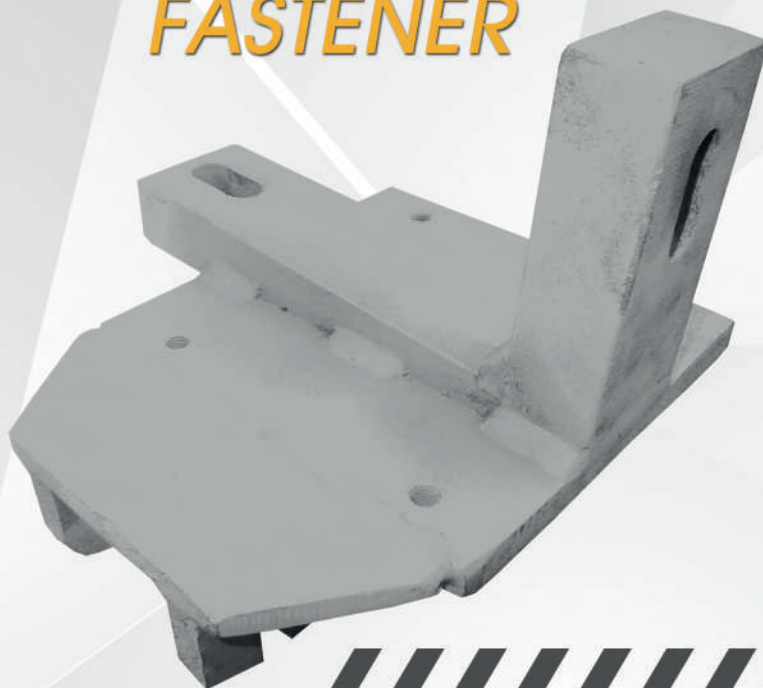
## SUPPORT ARM



## CONNECTING ROD



## FASTENER



8 VOIDS

6 VOIDS

5 VOIDS

4 VOIDS

# SAVIOLI METALMECCANICA

*Extruder spare parts*



**Telephone:** +39 0442 550345

**Email:** [info@saviolimetallmeccanica.it](mailto:info@saviolimetallmeccanica.it)



**Registered office:**

Via R. Gemma, 13 - 46035 - Ostiglia - MANTOVA - ITALY

**Operational Headquarters:**

Via Canove, 44 Z.A. Roncanova - 37060 - Gazzo Veronese  
VERONA - ITALY



[www.saviolimetallmeccanica.com](http://www.saviolimetallmeccanica.com)



Savioli Metallmeccanica Srl